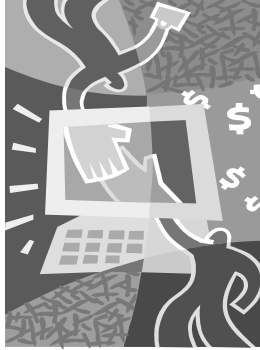




Note New Location Below



## Community E-waste Collection Program



**CAL POLY POMONA UNIVERSITY  
DROP OFF YOUR OLD EQUIPMENT  
MONDAY - FRIDAY  
8:00 AM - 5:00 PM  
CALL FOR AN APPOINTMENT**

To drop off E-Waste at dates/times other than listed above, please contact Environmental Health & Safety at (909) 869-4697 or [ehs@csupomona.edu](mailto:ehs@csupomona.edu).

Cal Poly Pomona's Department of Environmental Health & Safety and Facilities Management are very pleased to partner with eWaste Center Inc. to provide an e-waste solution to the campus and local communities including businesses.

*"Reduce. Reuse. Recycle."*

Additional information:  
[ehs.csupomona.edu/ewaste](http://ehs.csupomona.edu/ewaste)  
E-mail: [ehs@csupomona.edu](mailto:ehs@csupomona.edu)  
Telephone: (909) 869-4697

### FREE DROP OFF

- computer monitors
- visual display devices
- televisions
- personal computers and components
- cell phones
- printers
- fax machines
- stereo equipment

### PROHIBITED ITEMS

- Batteries
- Leaking equipment
- Industrial scale print process equipment
- Items too large for a 4' pallet
- Equipment with hazardous materials
- Washer, dryer, refrigerator, freezer, oven/range, dishwasher, room air-conditioner, or dehumidifier

Environmental Health & Safety Building 81A  
2740 South Campus Drive, Pomona CA 91768

